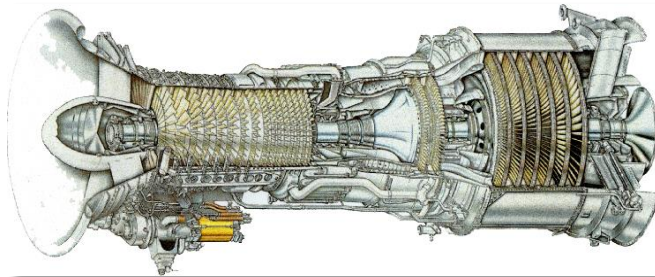




# **PURCHASE SPECIFICATIONS**

**FOR**

## **ONE (1) REFURBISHED 7LM2500-PE GAS TURBINE PACKAGE**



**ITEM NO. CTG~GTN-131**

**Offered For Immediate Sale By:**



**CTG**

Camelot Technologies  
Group International Inc.



## OVERVIEW

Thank you for your inquiry and interest in The Camelot Technologies Group International, Inc. (CTG) <http://www.camelottech.com>. CTG is the world's leading, privately held energy services and heavy power generation equipment sales company. Established in 1996, with its corporate headquarters now located Auburn, Alabama, CTG has become a longstanding and trusted global provider of new, used and refurbished heavy electrical power generation equipment. We also offer renewable energy equipment solutions according to each customer's exact specification through our affiliate company, The Renewable Technologies Corporation ([www.RenewableTechCorp.com](http://www.RenewableTechCorp.com)). CTG's core business model provides value added new, used and refurbished power equipment solutions, including engineering, financing, project management and technical support services to domestic and international electrical utility companies, power developers, private industry and contractors.

Learn more about our services, equipment and parent company, CTG Power Systems International Inc. at [www.CTGPowerSystems.com](http://www.CTGPowerSystems.com). Please do not hesitate to call us at +1 (334) 539-1700 or Email us at: [Info@Camelottech.com](mailto:Info@Camelottech.com) with any questions or inquiries you may have.

## THIS OFFERING

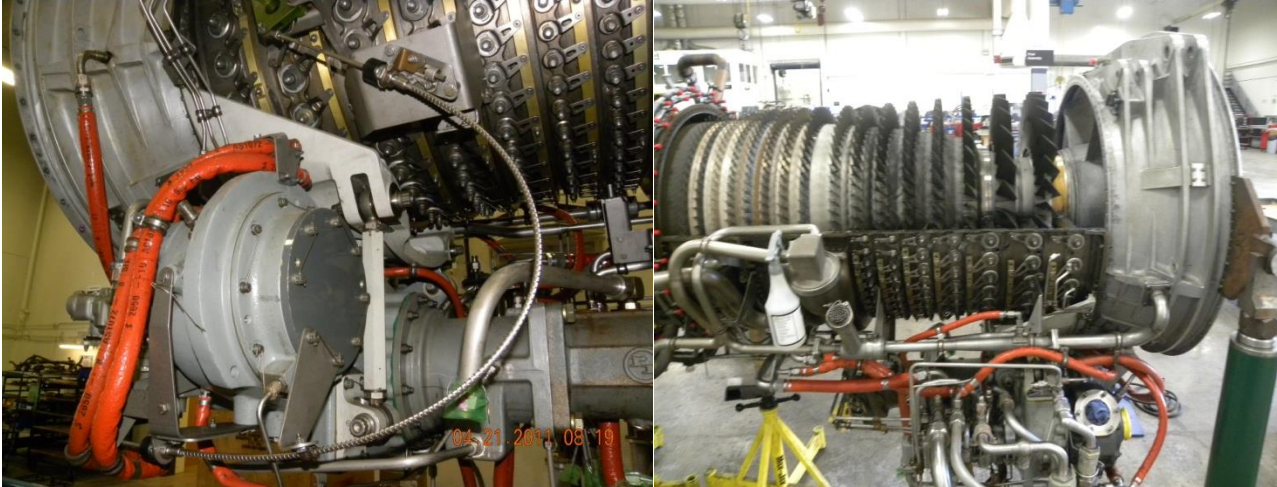
This section provides the general description, scope of supply, and supplementary requirements for equipment, materials, and services included with this refurbished **7LM2500-PE GAS TURBINE GENERATOR PACKAGE NO. CTG~GTN-131**. In general, American standard specifications are quoted throughout the Contract documents, but alternative internationally recognized standards may be substituted if approved in writing by purchaser.

**Disclaimer:** All property offered for auction sale is offered "As Is," "Where Is," with no returns and without recourse against The Camelot Technologies Group International, Inc. No guarantee, warranty or other representation is either expressed or implied unless specifically noted in the offering documents as to the working condition of said property; and no claims will be considered for damages or missing parts not reported in the sales listing. It is incumbent upon the buyer to thoroughly inspect the equipment being offered and determine its condition, maintenance history and suitability for its use or application.

## **I. LM2500 GAS TURBINE GENERATOR PACKAGE HISTORY**

This package is currently available and is stored in the southwest USA. It is an 7LM2500 PE Gas Turbine Generator package that was manufactured by Stewart & Stevenson in 1994. The unit was commissioned in 1995 in as a peak loading unit. The package was officially removed from service in June of 2010, dismantled and packed for freight to the USA in July of 2010. At the time of removing the package from service it had experienced only 7,144 hours of service. The package was installed and operated inside a building during its 15 years of service availability.

The generator package is a unique design based on the transportation requirements to move the unit into the original offshore site location. The normal LM2500 skid design was modified into three sub skids for easy loading and unloading. It is separated with bolt together flanges as a generator skid, LM2500 engine enclosure skid and the air intake housing skid. Due to weight & transportation restrictions in its previous project site the skids are 4' to 5' less in width.



To accommodate the fuel system requirement of diesel with steam injection the engine is configured with dual fuel nozzles, injecting steam in the natural gas side of the fuel nozzles. To modify the fuel system to accept natural gas will only require off engine system of a fuel metering valve, block and bleed system and associated piping.

The engine has been converted from a PH (Steam injected) to a standard PE model. The HPT and combustor was "0" timed.

## II. PACKAGE INCLUDES:

- Gas Turbine Engine: 7LM2500-PE
- Power Output: 26, 249 KW, at Generator Terminal
- Fuel Type: Liquid Fuel – Diesel ( can be converted to Nat. Gas)
- Hours of Operation: 7,144
- Generator: Brush Electric Machines LTD. BADX 7-167ER
- 11.0KV, 50 HZ, 3 Phase, 3000 RPM, Air Cooled Type ( 50/60 Hz. Dual Frequency)
- Coupling: Power Turbine to Generator



- L. O. System: GT L.O. Tank 600L, w/GT Driven Lube Pump
- Generator L.O. Tank 800L, w/Gen. Shaft dr. Pump
- Fuel System: Fuel Pump, Filter, Fuel Control Valve Fuel SO Valve
- Flow Meter
- Water Injection System Water Injection Control Valve, Flow meter
- Water Wash: Cleaning Tank, Nozzle Spray Manifold
- Hyd. Start: Hydraulic Lube Tank 150L, Charge Pump,
- Circulation Pump, Filter, Hydraulic Oil Cooler,
- Electric Motor
- Control System: Net Con 5000 Ver. 2.02-5 Vibration System: Bentley Nevada
- The steam injection system was not purchased with the package.

### **III. EQUIPMENT REQUIRED TO COMPLETE THE PACKAGE:**

- High Voltage Switch gear
- Motor Control Center
- Exhaust adapter and stack

The unit is currently stored in the boxes, crates and skids it was shipped from overseas. After the engine conversion from PH to PE the Gas Generator was re-installed in the engine enclosure. The package can be moved with the engine in place due to isolation springs that were installed for the shipment back to the US. All the engine depot and test reports are available upon request.

**PRICE: NEGOTIABLE**

**ALL EQUIPMENT IS OFFERED SUBJECT TO PRIOR SALE OR DISPOSITION AND WRITTEN CONFIRMATION BY THE CAMELOT TECHNOLOGIES GROUP INTERNATIONAL, INC. (CTG) PRIOR TO ACCEPTANCE OF ORDER. ALL SALES ARE SUBJECT TO CTG TERMS AND CONDITIONS A COPY OF WHICH WILL BE PROVIDED TO CUSTOMER.**



- Availability:** Immediately
- Inspection:** Immediately after verification of bank references and credit
- Warranty:** No / Equipment is Sold: "As Is/ Where Is" ( Extended Warranty is available)
- Removal & Freight:** Buyer Responsibility; FOB Site Storage / USA
- Purchase:** Immediately
- Delivery:** Buyer Responsibility

**PAYMENT TERMS**

The following terms will secure the units immediately:

- ❖ Bank Letter Confirmation of Funds
- ❖ Irrevocable Corporate Purchase Order accompanied by a non-refundable 25% Cash Deposit ( after inspection)
- ❖ Balance Due Prior to Removal and load out.

**FOR MORE INFORMATION PLEASE CONTACT:**

**The Camelot Technologies Group International, Inc.**

2415 Moores Mill Road, Ste. 265-203  
Auburn Alabama 36830  
Phone: (334) 539-1700  
Email: [Info@Camelottech.com](mailto:Info@Camelottech.com)  
Website: <http://www.Camelottech.com>

TERMS AND CONDITIONS OF SALE

GENERAL





This document together with any additional documentation signed by Seller and Buyer represents the Agreement between the parties. These terms may not be modified except in writing signed by an authorized representative of Seller. Any terms and conditions submitted in Buyer's inquiry or purchase order shall be null and void unless specifically agreed to in writing signed by an authorized representative of Seller. Catalogs, circulars and similar pamphlets of Seller are provided for general information purposes only and are not a part of the Agreement. Except as expressly contained herein no representation or warranty is made as to performance, size, durability, or other specifications of Sellers products and any information contained in catalogs, circulars and similar promotional or advertising material is for general informational purposes only.

#### **TAXES/DUTIES**

Any sales, use or other similar type taxes or import or export duties imposed on this transaction are not included in the price. Such taxes and/or duties shall be billed separately to Buyer. Seller will accept a valid exemption certificate from Buyer if applicable; however, if such exemption certificate is not recognized by the governmental taxing authority involved and Seller is required to pay the tax covered by such exemption certificate, Buyer shall promptly reimburse Seller for the taxes paid.

#### **EXCUSABLE DELAYS**

Seller shall not be responsible for nonperformance or delays in performance occasioned by any causes beyond Seller's reasonable control, including, but not limited to labor difficulties, delays of vendors or carriers, Seller's prompt receipt of Buyer's equipment, Seller's compliance with Buyer's change orders, fires, acts of God, war, non-governmental actions and material shortages. Any delays occasioned by such circumstances shall affect a corresponding extension of Seller's performance dates.

#### **DELIVERY, TITLE AND RISK OF LOSS**

Delivery manifests and dates are approximate, and are based upon prompt receipt of approvals, receipt of equipment from Buyer or vendors (as may be appropriate), or otherwise prompt receipt of all necessary information. Unless otherwise specified by Seller, all shipments are F.O.B., Seller's facility. Full risk of loss (including transportation delays and losses) shall pass to Buyer upon delivery of products to the F.O.B. point, or if Seller consents to a delay in shipment at the request of Buyer, risk of loss shall pass to Buyer upon notification by Seller that equipment is ready for transport.

#### **WARRANTY**

This 7LM2500 PE CGT package is sold **"As Is/Where Is"** without warranty either expressed or implied, unless specifically agreed to elsewhere and the effects of corrosion, erosion and normal wear and tear are specifically excluded and Seller will be held harmless. Seller will not be liable to Buyer for any loss or injury to persons or property (including the machinery which is the object of the work) caused in whole or in part by (1) the acts of Buyer or its agents, (2) failure to observe Seller's instructions, or (3) failure or malfunctioning of anything not furnished by Seller. The preceding paragraphs set forth the exclusive remedies for warranty claims, and upon the expiration of the warranty period, all such liability shall terminate.

#### **PAYMENT TERMS**

Payment terms are as indicated in the proposal. Invoiced milestone payments are due within thirty days of invoice date. If the order is placed from outside the United States, an irrevocable letter of credit will be required, drawn on a bank acceptable to Seller for the amount of the order and in accordance with Seller's credit terms. Payment will be drawn against the letter of credit. Payment received thirty days after the invoice date is subject to interest charges at the maximum allowable rate as provided by applicable law.

#### **LIMITATION OF LIABILITY**

Seller shall in no event be liable to Buyer or any successor for any consequential, incidental, or indirect damages arising out of this prospectus or any breach thereof, including but not limited to damages resulting from: loss of use, profits, revenue, interest or goodwill; work stoppage, impairment of other goods, shutdown or non-operation, increased expenses of operation; cost of purchase of replacement power, or claims of Buyer or customers of Buyer for service interruption whether or not such loss or damage is based on contract, indemnity, tort, product or strict liability or otherwise.

**THE REMEDIES OF BUYER SET FORTH HEREIN ARE EXCLUSIVE. THE TOTAL LIABILITY OF SELLER WITH RESPECT TO THE PER-FORMANCE OR BREACH OF THIS AGREEMENT WHETHER BASED ON CONTRACT, INDEMNITY, TORT, PRODUCT OR STRICT LIABILITY OR OTHERWISE, SHALL NOT EXCEED THE CONTRACT PRICE OF THE AGREEMENT OR THE PART UPON WHICH SUCH LIABILITY IS BASED.**

#### **ASSIGNMENT**

Neither party shall assign or transfer the intended LOI without the prior written consent of the other party, which shall not be unreasonably withheld.

#### **GOVERNING LAW**

The rights and obligations of the parties shall be governed by the laws of the State of Alabama, excluding conflict of laws provisions