



**TWO (2) X LOW HOUR 60HZ. DUAL FUEL SGT400  
MOBILE DLE GAS TURBINE PACKAGES**  
ASSET NO. CTG-GTDF-M1001

**TWO (2) X 60HZ. DUAL FUEL SGT400 MOBILE GAS TURBINE PACKAGES**

These Siemens SGT-400 Mobile Gas Turbine Generator Sets are a modular, package power generation system designed for rapid deployment and ease of installation. The gas turbine engine contained in each is a proven, robust design equipped for natural gas or liquid fuel operation, with a Dry-Low Emissions (DLE) combustion system. The mobile, trailer-mounted package design incorporates many design features such as integrated inlet filter house and exhaust stack assemblies, compact, package-mounted lube oil coolers, stand-alone control room and available black start Diesel generator set. The 12.9MW (ISO) generator provides reliable power for 60Hz applications. Total time on these like-new units is just 40-60 total running hours. CTG Power Systems International can support relocation, site installation, warranties and long term service support. These packages include warranty.

**EQUIPMENT SPECIFICATIONS:**

**Gas Turbine Information**

**Rating and Data**

Compressor Stages	11 Stage, Axial Flow (16:7:1)
Power Turbine Stages	2
PT Shaft Speed	9500 RPM
Exhaust Temp	560 Deg. (C)
Time Since New	40-60 Total Operating Hours
Heat Rate (ISO)	10,500 BTU/kWh

**Fuel & Combustor Information**

Fuel System	Natural Gas and Liquid (DF2) Fuel with Propane Start Assist
Type	6 Reverse-Flow Tubular Combustion Chambers
Emissions Control	Dry Low Emissions (DLE)

**Trailer & Package Information**

Starting System	Electrically-Driven Hydraulic
Type	Modular, Packaged Unit with Acoustic Enclosures for 85dB
Generator Trailer Assembly	One (1) Five Axle Containing Generator and Reduction Gearbox
Gas Turbine Trailer Assembly	One (1) Three Axle Containing Gas Turbine Package, LO Cooler, Fire Cabinet, Water Wash Module

**Generator Information**

Type	Brushless AC, TEEAC 4-Pole, NEMA NG1
Frequency	60Hz (50Hz available by conversion)
Rated Voltage	16,125 kVA
Insulation	Class F Insulation, Class B Temp Rise
Power Factor	.80pf

**Operating Data & Manuals**

Yes

**Speed**

1800 rpm (or 1500 rpm for 50Hz)

**Control System**

Siemens Simatic PCS7 PLC

**Fire Suppression**

CO2 system with dispersion nozzles

**Maintenance Data**

**Turbine Total Operating Time**

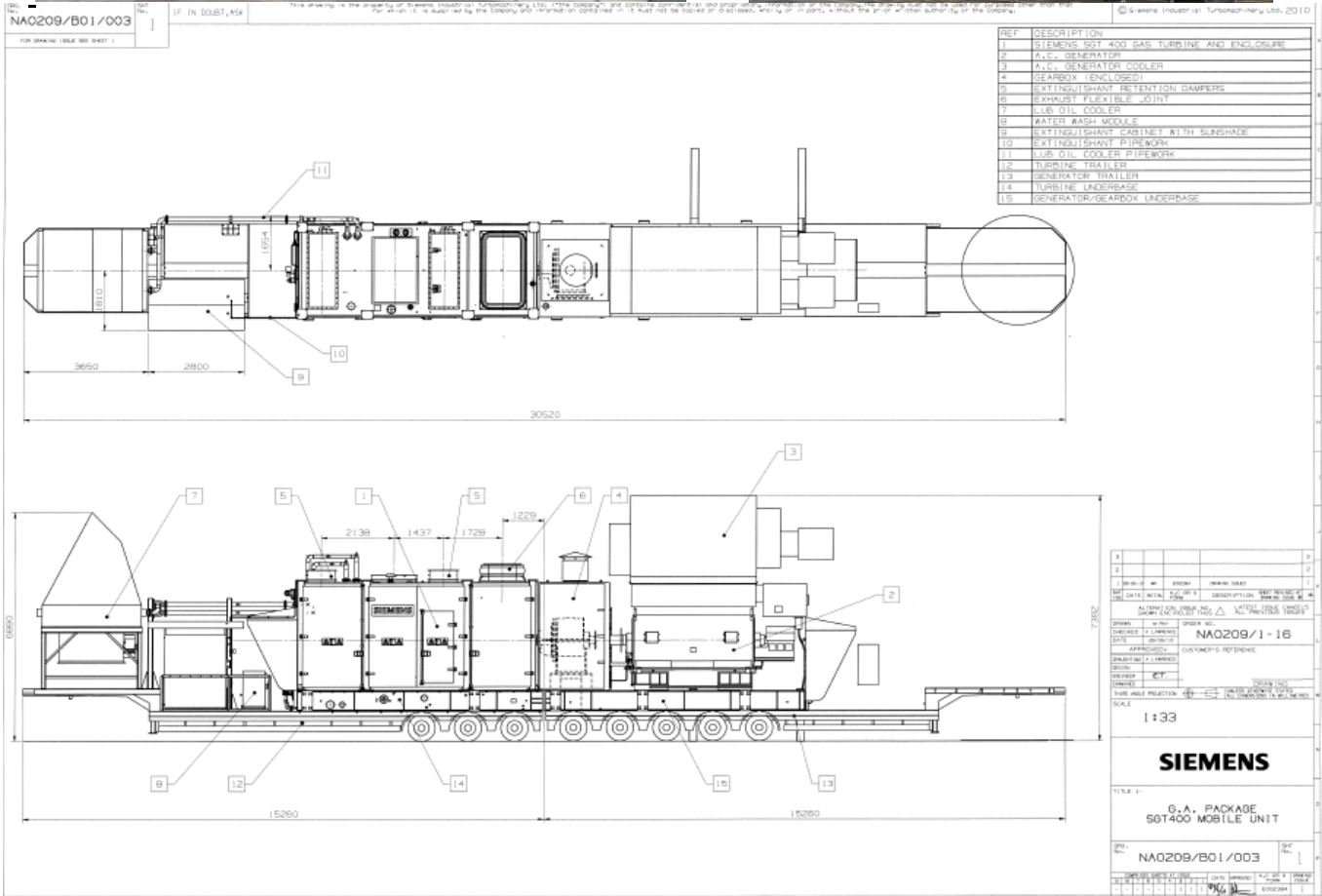
40-60 Hours

**Last Documented Overhaul**

N/A

**Current Status**

In storage and control of CTG-PSI



## NOTES AND EXCEPTIONS:

- All optional equipment and services will be quoted upon request and **added** to proposal.
- Delivery for Item 1.0 is **available immediately** pending any modifications required by client and project site due to ambient conditions in \_\_\_\_\_ and with receipt of 25% cash wire deposit to secure order.
- Each unit includes full 12 Month factory warranty. Warranties are assigned directly to end-user subject to ISO conditions unless modifications are requested and authorized.
- Units will not be loaded out and onto vessel until 100% payment is complete.
- Cash sale only. No Letters of Credit are accepted for these units.
- CTG-PSI will provide a firm fixed shipping and insurance quote (CIF). All shipping and insurance is quoted at cost +10% (which will be added and included in price to be quoted in final proposal).
- BIFA terms and conditions, limited liability.
- Sales tax, special duties and any port charges are **not** included.
- **Excludes** any legalized documentation.
- This estimate **excludes** off-skid electrical switchgear and transformers.
- Performance test results per Siemens standard practice **included**.
- This offering **excludes** any in-country taxes on labor, materials, or subcontract.
- **All Import Taxes on Equipment and Materials:** Not included in Proposal - under CIF terms those are for account of receiver.
- **All Custom Fees Exporting:** Export customs declaration is performed by shipper are included in CTG-PSI shipping and insurance CIF proposal.
- **All Custom Fees For Importing Goods:** Not included for import - under CIF terms those are for account of receiver.
- **All Custom Taxes: Not included** - under CIF terms those are for account of receiver.
- **National Treasury Fees:** Not included - under CIF terms those are for account of receiver.
- **VAT:** Not included - under CIF terms those are for account of receiver.
- **Local Handling Fees:** Under CIF terms Yes, handling charges would be included up to arrival port of import (receiver has to take control of cargo upon vessel arrival).
- **Deconsolidation Fee / Port Fee:** Once vessel arrives and cargo is discharged, receiver would have to arrange for any further services and payment of fees under CIF terms.
- **Documentation Fees:** Yes, to be **included** in CTG-PSI shipping and insurance proposal.

The Camelot Technologies Group, Inc. (CTG) is the seller and will facilitate all aspects of the equipment transaction. Additional services such as dismantling, shipping and installation are available through CTG and will be performed under separate contract. A Letter of Intent (LOI) to Purchase coupled with verification of the availability of funds is required. Buyer will be required to render a deposit of up to 25% of the total purchase price to secure the option to purchase and financial closing shall take place within 30-45 days of inspection and execution of Purchase Sale Agreement which ever event occurs earlier. CTG makes no warranty or representation regarding the accuracy or correctness of the information contained herein. The responsibility for assessing the accuracy or correctness of that information resides with the buyer, his agent, designee, affiliates or those who may rely on that information. Conditions: "Subject to Availability". Therefore, this proposal is based on the attached terms and conditions.

*For more information please contact us:*

**The Camelot Technologies Group International, Inc. (CTG)**

a subsidiary Company of CTG Power Systems International Inc. 2415 Moores Mill Road Ste. 265-203 Auburn  
Alabama 36830 Tel: (334) 539-1700 | Fax: (334) 539-1710

Email: [Sales@Camelottech.com](mailto:Sales@Camelottech.com) Website: [www.Camelottech.com](http://www.Camelottech.com) [www.CTGPowerSystems.com](http://www.CTGPowerSystems.com)

## **TERMS AND CONDITIONS OF SALE**

### **GENERAL**

This document together with any additional documentation signed by Seller and Buyer represents the Agreement between the parties. These terms may not be modified except in writing signed by an authorized representative of Seller. Any terms and conditions submitted in Buyer's inquiry or purchase order shall be null and void unless specifically agreed to in writing signed by an authorized representative of Seller. Catalogs, circulars and similar pamphlets of Seller are provided for general information purposes only and are not a part of the Agreement. Except as expressly contained herein no representation or warranty is made as to performance, size, durability, or other specifications of Seller's products and any information contained in catalogs, circulars and similar promotional or advertising material is for general informational purposes only.

### **TAXES/DUTIES**

Any sales, use or other similar type taxes or import or export duties imposed on this transaction are not included in the price. Such taxes and/or duties shall be billed separately to Buyer. Seller will accept a valid exemption certificate from Buyer if applicable; however, if such exemption certificate is not recognized by the governmental taxing authority involved and Seller is required to pay the tax covered by such exemption certificate, Buyer shall promptly reimburse Seller for the taxes paid.

### **EXCUSABLE DELAYS**

Seller shall not be responsible for nonperformance or delays in performance occasioned by any causes beyond Seller's reasonable control, including, but not limited to labor difficulties, delays of vendors or carriers, Seller's prompt receipt of Buyer's equipment, Seller's compliance with Buyer's change orders, fires, acts of God, war, non-governmental actions and material shortages. Any delays occasioned by such circumstances shall affect a corresponding extension of Seller's performance dates.

### **DELIVERY, TITLE AND RISK OF LOSS**

Delivery manifests and dates are approximate, and are based upon prompt receipt of approvals, receipt of equipment from Buyer or vendors (as may be appropriate), or otherwise prompt receipt of all necessary information. Unless otherwise specified by Seller, all shipments are F.O.B., Seller's facility. Full risk of loss (including transportation delays and losses) shall pass to Buyer upon delivery of products to the F.O.B. point, or if Seller consents to a delay in shipment at the request of Buyer, risk of loss shall pass to Buyer upon notification by Seller that equipment is ready for transport.

### **WARRANTY**

These (2) X SGT400 Gas Turbine Packages are sold with warranty unless specifically noted or agreed to elsewhere and the effects of corrosion, erosion and normal wear and tear are specifically excluded and Seller will be held harmless. Seller will not be liable to Buyer for any loss or injury to persons or property (including the machinery which is the object of the work) caused in whole or in part by (1) the acts of Buyer or its agents, (2) failure to observe Seller's instructions, or (3) failure or malfunctioning of anything not furnished by Seller. The preceding paragraphs set forth the exclusive remedies for warranty claims, and upon the expiration of the warranty period, all such liability shall terminate.

### **PAYMENT TERMS**

Payment terms are as indicated in the proposal. Invoiced milestone payments are due within thirty days of invoice date. If the order is placed from outside the United States, an irrevocable letter of credit will be required, drawn on a bank acceptable to Seller for the amount of the order. Payment will be drawn against the letter of credit. Payment received thirty days after the invoice date is subject to interest charges at the maximum allowable rate as provided by applicable law.

### **LIMITATION OF LIABILITY**

Seller shall in no event be liable to Buyer or any successor for any consequential, incidental, or indirect damages arising out of this prospectus or any breach thereof, including but not limited to damages resulting from: loss of use, profits, revenue, interest or goodwill; work stoppage, impairment of other goods, shutdown or non-operation, increased expenses of operation; cost of purchase of replacement power, or claims of Buyer or customers of Buyer for service interruption whether or not such loss or damage is based on contract, indemnity, tort, product or strict liability or otherwise.

**THE REMEDIES OF BUYER SET FORTH HEREIN ARE EXCLUSIVE. THE TOTAL LIABILITY OF SELLER WITH RESPECT TO THE PERFORMANCE OR BREACH OF THIS AGREEMENT WHETHER BASED ON CONTRACT, INDEMNITY, TORT, PRODUCT OR STRICT LIABILITY OR OTHERWISE, SHALL NOT EXCEED THE CONTRACT PRICE OF THE AGREEMENT OR THE PART UPON WHICH SUCH LIABILITY IS BASED.**

### **ASSIGNMENT**

Neither party shall assign or transfer the intended LOI without the prior written consent of the other party, which shall not be unreasonably withheld.

### **GOVERNING LAW**

The rights and obligations of the parties shall be governed by the laws of the State of Alabama, excluding conflict of laws provisions.